

GENERAL NOTES

1. THE OVERALL ARCHITECTURAL PLAN IS PROVIDED FOR THE CONTRACTOR'S REFERENCE. SEE MECHANICAL DRAWINGS FOR SPECIFIC AREAS OF WORK.
2. SEE MECHANICAL AND ELECTRICAL DRAWINGS FOR UNDERFLOOR AREA WORK. THERE IS NO ARCHITECTURAL SCOPE IN THIS AREA.
3. SEE MECHANICAL AND ELECTRICAL DRAWINGS FOR MEZZANINE WORK. THERE IS NO ARCHITECTURAL SCOPE IN THIS AREA.

Architects Alaska
 ARCHITECTS ALASKA
 AK Corp. Authorization AECC561
 900 W. 5th Avenue, Suite 403
 Anchorage, Alaska 99501-2029
 907.272.3567 907.277.1732 fax
 191 E. Swanson Avenue, Suite 203
 Wasilla, Alaska 99564-7025
 907.373.7503 907.376.3166 fax
 104 E. Main Street, Suite 209
 Bozeman, Montana 59715
 406.404.1588
 www.architectsalaska.com



GALENA CITY SCHOOL DISTRICT
SHS HVAC UPGRADES
 GALENA, ALASKA

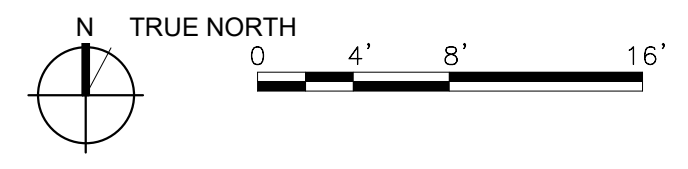
Revisions		
No.	Description	Date

Drawn by SAS	Date 29 APRIL 2021
Checked DLM	Job No. 20036.02

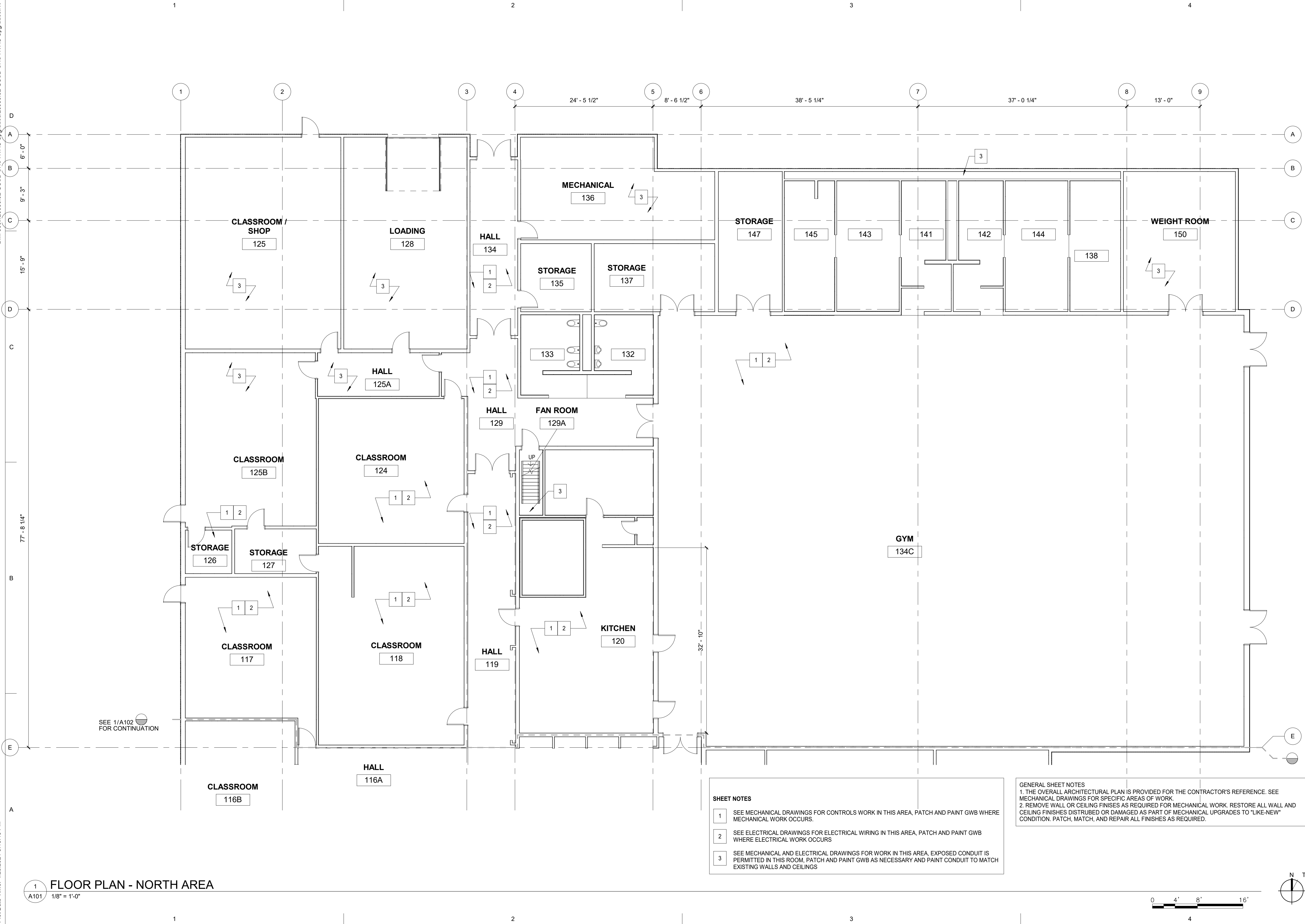
Sheet Contents
 OVERALL FLOOR PLAN

Sheet No.
A100

A2
 A100
OVERALL FLOOR PLAN
 1/16" = 1'-0"



BIM 360/20036.02 GCSD SHS HVAC Upgrades/20036.02 GCSD SHS HVAC Upgrades.rvt
Plot Date Time: 4/29/2021 5:18:48 PM



SEE 1/A102 FOR CONTINUATION

- SHEET NOTES**
- SEE MECHANICAL DRAWINGS FOR CONTROLS WORK IN THIS AREA, PATCH AND PAINT GWB WHERE MECHANICAL WORK OCCURS.
 - SEE ELECTRICAL DRAWINGS FOR ELECTRICAL WIRING IN THIS AREA, PATCH AND PAINT GWB WHERE ELECTRICAL WORK OCCURS
 - SEE MECHANICAL AND ELECTRICAL DRAWINGS FOR WORK IN THIS AREA, EXPOSED CONDUIT IS PERMITTED IN THIS ROOM, PATCH AND PAINT GWB AS NECESSARY AND PAINT CONDUIT TO MATCH EXISTING WALLS AND CEILINGS

GENERAL SHEET NOTES
 1. THE OVERALL ARCHITECTURAL PLAN IS PROVIDED FOR THE CONTRACTOR'S REFERENCE. SEE MECHANICAL DRAWINGS FOR SPECIFIC AREAS OF WORK.
 2. REMOVE WALL OR CEILING FINISHES AS REQUIRED FOR MECHANICAL WORK. RESTORE ALL WALL AND CEILING FINISHES DISTURBED OR DAMAGED AS PART OF MECHANICAL UPGRADES TO "LIKE-NEW" CONDITION. PATCH, MATCH, AND REPAIR ALL FINISHES AS REQUIRED.

1 FLOOR PLAN - NORTH AREA
 A101 1/8" = 1'-0"



Architects Alaska
 ARCHITECTS ALASKA
 AK Corp. Authorization AECC561
 900 W. 5th Avenue, Suite 403
 Anchorage, Alaska 99501-2029
 907.272.3567 907.277.1732 fax
 191 E. Swanson Avenue, Suite 203
 Wasilla, Alaska 99564-7025
 907.373.7503 907.376.3166 fax
 104 E. Main Street, Suite 209
 Bozeman, Montana 59715
 406.404.1588
 www.architectsalaska.com



GALENA CITY SCHOOL DISTRICT
SHS HVAC UPGRADES
GALENA, ALASKA

Revisions

No.	Description	Date

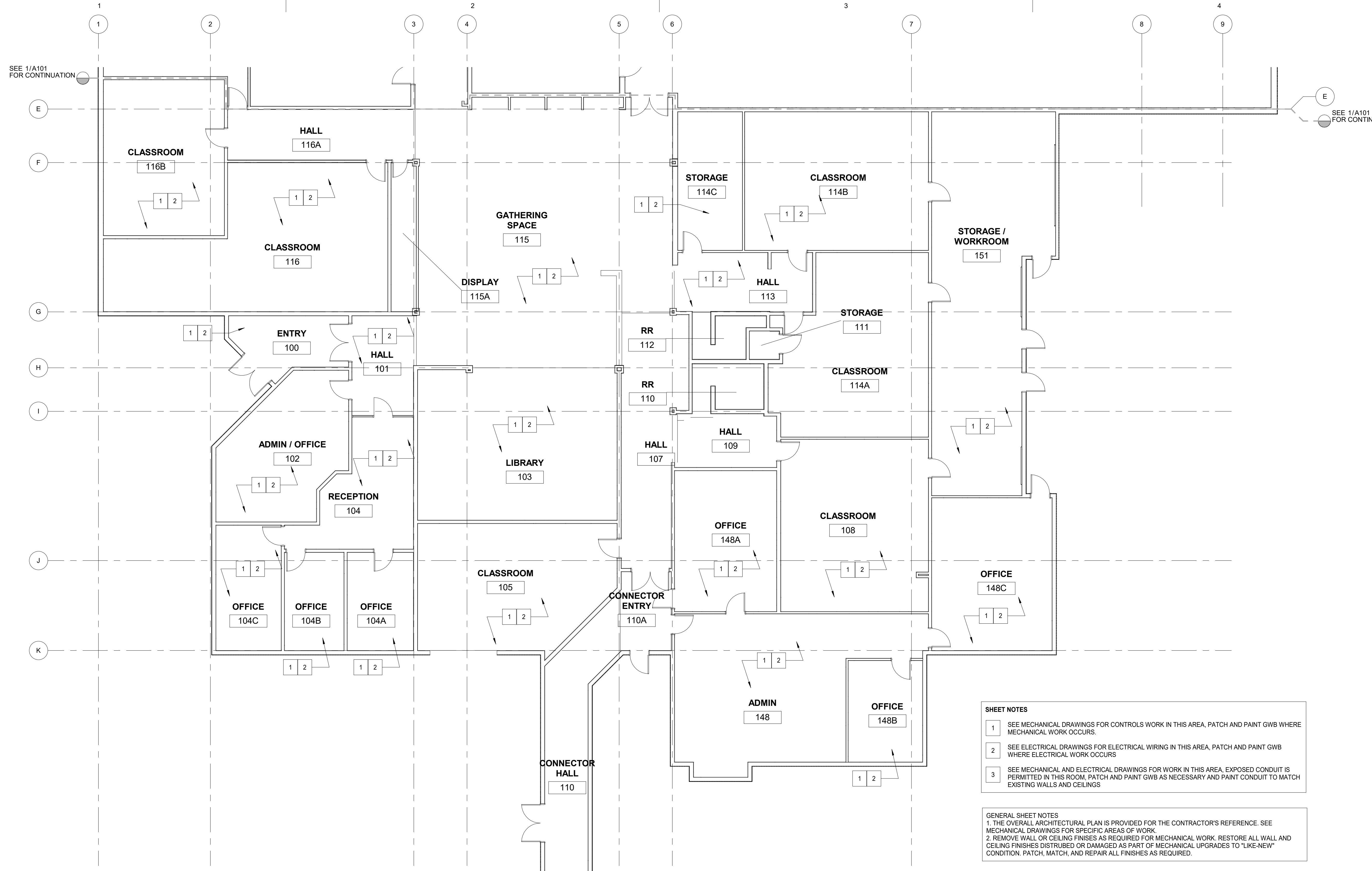
Drawn by SAS	Date 29 APRIL 2021
Checked DLM	Job No. 20036.02

Sheet Contents
 FLOOR PLAN - NORTH

Sheet No.
A101

BIM 360/20036.02 GCSD SHS HVAC Upgrades/20036.02 GCSD SHS HVAC Upgrades.rvt

Plot Date Time: 4/29/2021 5:18:48 PM



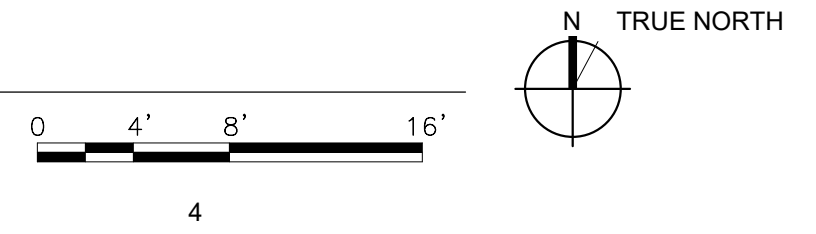
- SHEET NOTES**
- SEE MECHANICAL DRAWINGS FOR CONTROLS WORK IN THIS AREA, PATCH AND PAINT GWB WHERE MECHANICAL WORK OCCURS.
 - SEE ELECTRICAL DRAWINGS FOR ELECTRICAL WIRING IN THIS AREA, PATCH AND PAINT GWB WHERE ELECTRICAL WORK OCCURS
 - SEE MECHANICAL AND ELECTRICAL DRAWINGS FOR WORK IN THIS AREA, EXPOSED CONDUIT IS PERMITTED IN THIS ROOM, PATCH AND PAINT GWB AS NECESSARY AND PAINT CONDUIT TO MATCH EXISTING WALLS AND CEILING

GENERAL SHEET NOTES

1. THE OVERALL ARCHITECTURAL PLAN IS PROVIDED FOR THE CONTRACTOR'S REFERENCE. SEE MECHANICAL DRAWINGS FOR SPECIFIC AREAS OF WORK

2. REMOVE WALL OR CEILING FINISHES AS REQUIRED FOR MECHANICAL WORK. RESTORE ALL WALL AND CEILING FINISHES DISTURBED OR DAMAGED AS PART OF MECHANICAL UPGRADES TO "LIKE-NEW" CONDITION. PATCH, MATCH, AND REPAIR ALL FINISHES AS REQUIRED.

1
A102
FLOOR PLAN - SOUTH AREA
1/8" = 1'-0"



Architects Alaska
ARCHITECTS ALASKA
AK Corp. Authorization AECC661
900 W. 5th Avenue, Suite 403
Anchorage, Alaska 99501-2029
907.272.3567 907.277.1732 fax
191 E. Swanson Avenue, Suite 203
Wasilla, Alaska 99564-7025
907.373.7503 907.376.3166 fax
104 E. Main Street, Suite 209
Bozeman, Montana 59715
406.404.1588
www.architectsalaska.com



GALENA CITY SCHOOL DISTRICT
SHS HVAC UPGRADES
GALENA, ALASKA

Revisions

No.	Description	Date

Drawn by SAS	Date 29 APRIL 2021
Checked DLM	Job No. 20036.02

Sheet Contents
FLOOR PLAN - SOUTH

Sheet No.
A102