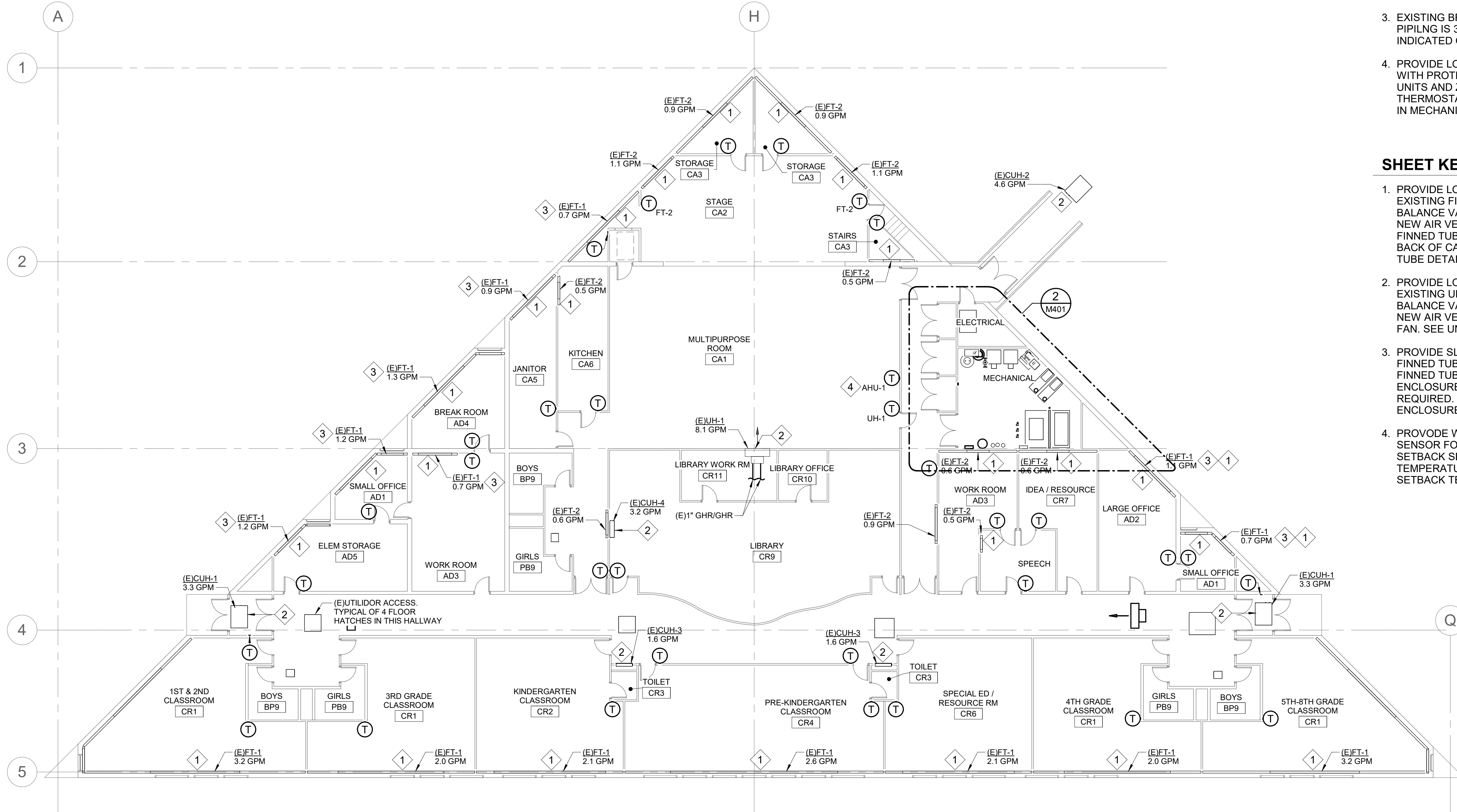


C:\Users\Jeremy.Egger\Documents\INF-MECH-10114.22002_FV22_Jeremy.Egger\HHTW4.rvt

Plot Date Time: 6/24/2022 3:49:28 PM



SHEET NOTES

1. REBALANCE HEATING SYSTEM PER ORIGINAL CONDITION FLOWRATES INDICATED.
2. CLEAN ALL EXISTING UNIT HEATER COILS AND FINNED TUBE.
3. EXISTING BRANCH PIPING NOT SHOWN. BRANCH PIPING IS 3/4" FOR ALL TERMINAL UNITS UNLESS INDICATED OTHERWISE.
4. PROVIDE LOCALLY ADJUSTABLE THERMOSTATS WITH PROTECTIVE COVERS FOR ALL TERMINAL UNITS AND ZONES AS INDICATED. ALL THERMOSTATS SHALL TIE TO CENTRAL DDC PANEL IN MECHANICAL ROOM.

SHEET KEYNOTES

1. PROVIDE LOW VOLTAGE CONTROL VALVE FOR EXISTING FINNED TUBE. PROVIDE NEW BALANCE VALVE, NEW ISOLATION VALVES, AND NEW AIR VENT. PROVIDE ACCESS DOORS TO FINNED TUBE VALVES WHERE HIDDEN BEHIND BACK OF CABINETRY. SEE NEW WORK FINNED TUBE DETAIL.
2. PROVIDE LOW VOLTAGE CONTROL VALVE FOR EXISTING UNIT HEATER. PROVIDE NEW BALANCE VALVE, NEW ISOLATION VALVES, AND NEW AIR VENT. CLEAN UNIT HEATER COIL AND FAN. SEE UNIT HEATER NEW WORK DETAIL.
3. PROVIDE SLOPED TOP ENCLOSURE FOR FINNED TUBE. TAKE MEASUREMENTS OF FINNED TUBE AND VERIFY DIMENSIONS OF ENCLOSURE DEPTH, LENGTH, AND HEIGHT REQUIRED. SEE SPECIFICATIONS FOR ENCLOSURE REQUIREMENTS.
4. PROVIDE WALL MOUNTED TEMPERATURE SENSOR FOR UNOCCUPIED MODE HEATING SETBACK SEQUENCE FOR AHU-1. TEMPERATURE PROBE WALL PLATE ONLY. SETBACK TEMPERATURE ADJUSTABLE BY DDC.

1 HYDRONIC PLAN
M111 SCALE: 3/32" = 1'-0"

Architects Alaska
ARCHITECTS ALASKA
AK Corp. Authorization AECC561
906 W. 5th Avenue, Suite 403
Anchorage, Alaska, 99501
907.272.3567
191 E. Swanson Avenue, Suite 203
Wasilla, Alaska 99554
907.373.7503
www.architectsalaska.com

Anchorage, AK
2700 Gambell St. Ste. 500
Anchorage, AK 99503
Phone: 907.743.3200
Fax: 907.473.3295
AECC163270



**GALENA ELEMENTARY SCHOOL
SIDNEY C HUNTINGTON
SCHOOLS
GALENA, ALASKA**

REVISION		
NO	DISCRPTION	DATE

Drawn by CSB	Date 29 APRIL 2022
Checked DTR	Job No. 10114.22002

Sheet Contents FIRST FLOOR HYDRONIC PLAN

Sheet No.
M111